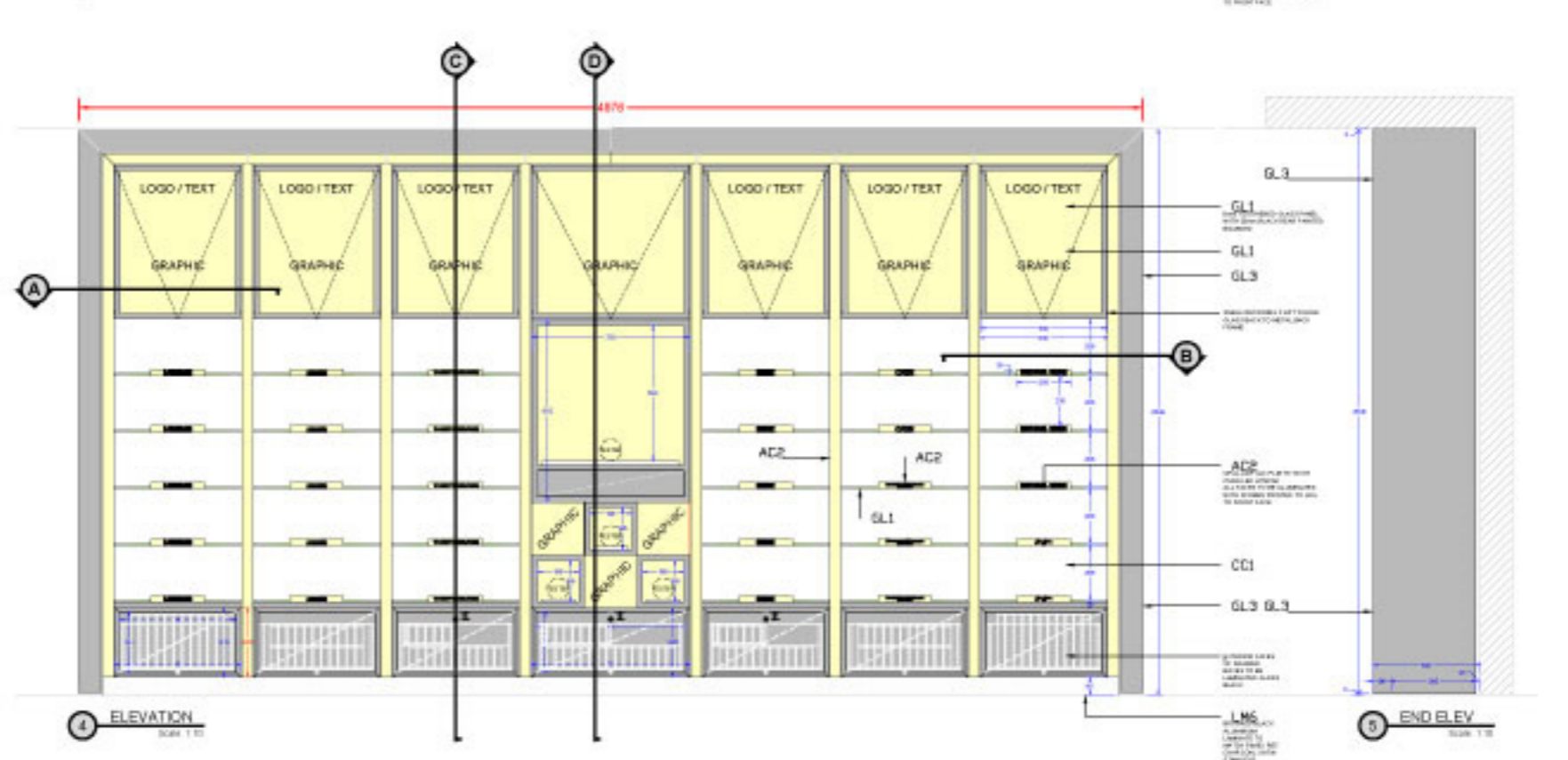
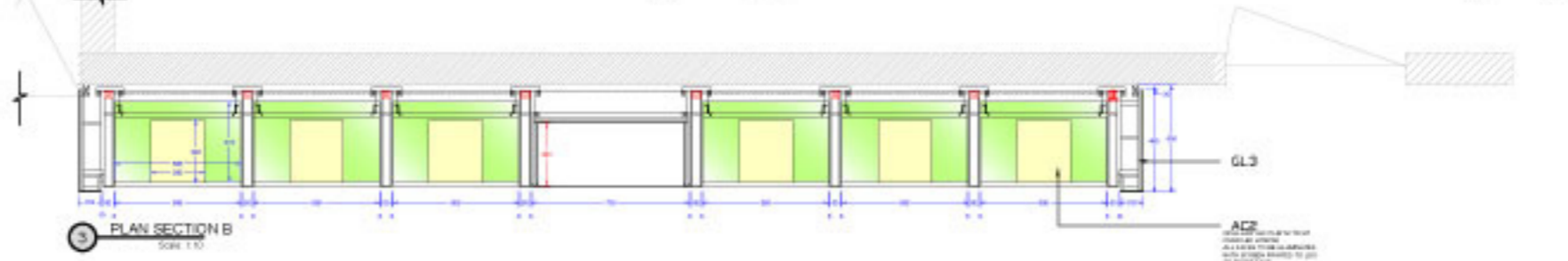
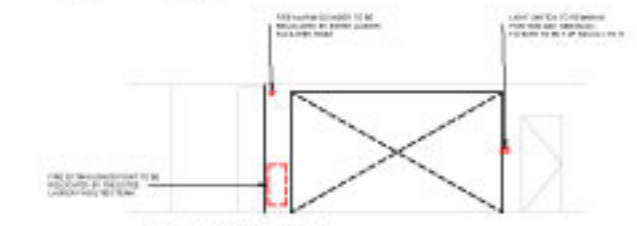
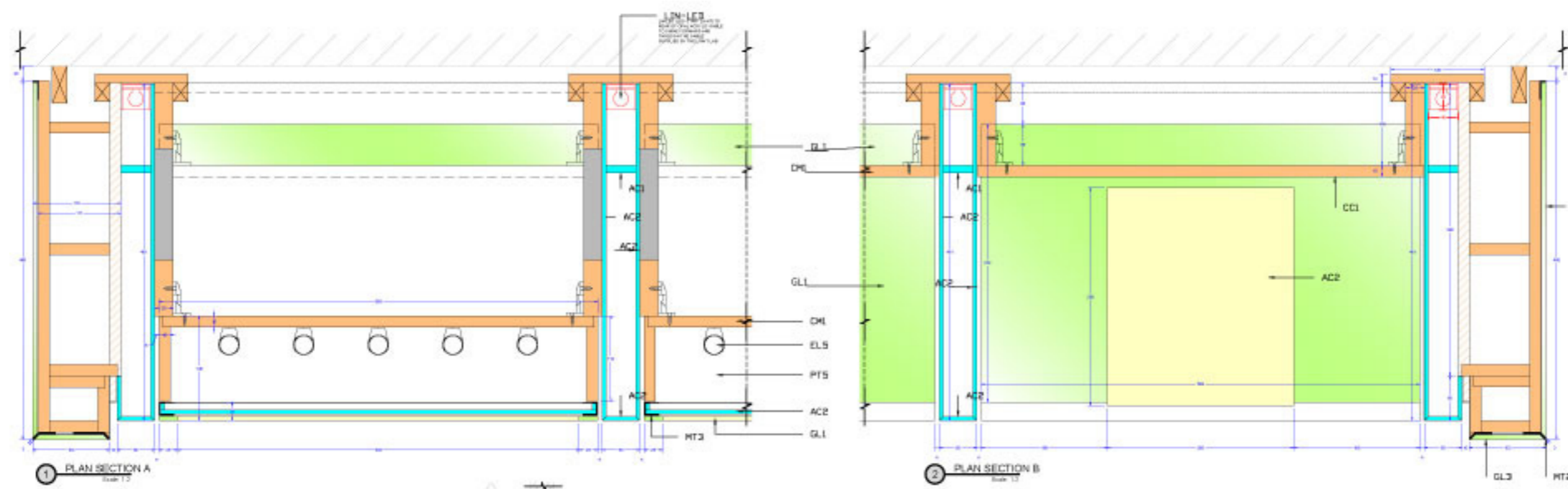




MATERIALS KEY

01	CONCRETE	[Color swatch]
02	BRICKWORK	[Color swatch]
03	GLAZING	[Color swatch]
04	WOOD	[Color swatch]
05	PAINT	[Color swatch]
06	ROOFING	[Color swatch]
07	MECHANICAL	[Color swatch]
08	ELECTRICAL	[Color swatch]
09	PLASTER	[Color swatch]
10	INSULATION	[Color swatch]
11	AC1	[Color swatch]
12	AC2	[Color swatch]
13	CC1	[Color swatch]
14	GL1	[Color swatch]
15	GL2	[Color swatch]
16	GL3	[Color swatch]
17	MT1	[Color swatch]
18	MT2	[Color swatch]
19	MT3	[Color swatch]
20	MT4	[Color swatch]
21	MT5	[Color swatch]
22	MT6	[Color swatch]
23	MT7	[Color swatch]
24	MT8	[Color swatch]
25	MT9	[Color swatch]
26	MT10	[Color swatch]
27	MT11	[Color swatch]
28	MT12	[Color swatch]
29	MT13	[Color swatch]
30	MT14	[Color swatch]
31	MT15	[Color swatch]
32	MT16	[Color swatch]
33	MT17	[Color swatch]
34	MT18	[Color swatch]
35	MT19	[Color swatch]
36	MT20	[Color swatch]
37	MT21	[Color swatch]
38	MT22	[Color swatch]
39	MT23	[Color swatch]
40	MT24	[Color swatch]
41	MT25	[Color swatch]
42	MT26	[Color swatch]
43	MT27	[Color swatch]
44	MT28	[Color swatch]
45	MT29	[Color swatch]
46	MT30	[Color swatch]
47	MT31	[Color swatch]
48	MT32	[Color swatch]
49	MT33	[Color swatch]
50	MT34	[Color swatch]
51	MT35	[Color swatch]
52	MT36	[Color swatch]
53	MT37	[Color swatch]
54	MT38	[Color swatch]
55	MT39	[Color swatch]
56	MT40	[Color swatch]
57	MT41	[Color swatch]
58	MT42	[Color swatch]
59	MT43	[Color swatch]
60	MT44	[Color swatch]
61	MT45	[Color swatch]
62	MT46	[Color swatch]
63	MT47	[Color swatch]
64	MT48	[Color swatch]
65	MT49	[Color swatch]
66	MT50	[Color swatch]



GENERAL NOTES

GENERAL NOTES
 1. ALL WORK TO BE IN ACCORDANCE WITH THE CURRENT EDITIONS OF THE BRITISH STANDARDS INSTITUTION (BSI) STANDARDS.
 2. ALL WORK TO BE IN ACCORDANCE WITH THE CURRENT EDITIONS OF THE AUSTRALIAN STANDARDS ASSOCIATION (AS/NZS) STANDARDS.
 3. ALL WORK TO BE IN ACCORDANCE WITH THE CURRENT EDITIONS OF THE NEW ZEALAND STANDARDS ASSOCIATION (NZS) STANDARDS.
 4. ALL WORK TO BE IN ACCORDANCE WITH THE CURRENT EDITIONS OF THE SOUTH AFRICAN STANDARDS ASSOCIATION (SANS) STANDARDS.
 5. ALL WORK TO BE IN ACCORDANCE WITH THE CURRENT EDITIONS OF THE SOUTH AFRICAN NATIONAL STANDARDS (SANS) STANDARDS.
 6. ALL WORK TO BE IN ACCORDANCE WITH THE CURRENT EDITIONS OF THE SOUTH AFRICAN NATIONAL STANDARDS (SANS) STANDARDS.
 7. ALL WORK TO BE IN ACCORDANCE WITH THE CURRENT EDITIONS OF THE SOUTH AFRICAN NATIONAL STANDARDS (SANS) STANDARDS.
 8. ALL WORK TO BE IN ACCORDANCE WITH THE CURRENT EDITIONS OF THE SOUTH AFRICAN NATIONAL STANDARDS (SANS) STANDARDS.
 9. ALL WORK TO BE IN ACCORDANCE WITH THE CURRENT EDITIONS OF THE SOUTH AFRICAN NATIONAL STANDARDS (SANS) STANDARDS.
 10. ALL WORK TO BE IN ACCORDANCE WITH THE CURRENT EDITIONS OF THE SOUTH AFRICAN NATIONAL STANDARDS (SANS) STANDARDS.

ELECTRICAL

ELECTRICAL
 1. ALL ELECTRICAL WORK TO BE IN ACCORDANCE WITH THE CURRENT EDITIONS OF THE SOUTH AFRICAN NATIONAL STANDARDS (SANS) STANDARDS.
 2. ALL ELECTRICAL WORK TO BE IN ACCORDANCE WITH THE CURRENT EDITIONS OF THE SOUTH AFRICAN NATIONAL STANDARDS (SANS) STANDARDS.
 3. ALL ELECTRICAL WORK TO BE IN ACCORDANCE WITH THE CURRENT EDITIONS OF THE SOUTH AFRICAN NATIONAL STANDARDS (SANS) STANDARDS.
 4. ALL ELECTRICAL WORK TO BE IN ACCORDANCE WITH THE CURRENT EDITIONS OF THE SOUTH AFRICAN NATIONAL STANDARDS (SANS) STANDARDS.
 5. ALL ELECTRICAL WORK TO BE IN ACCORDANCE WITH THE CURRENT EDITIONS OF THE SOUTH AFRICAN NATIONAL STANDARDS (SANS) STANDARDS.

REVISIONS

NO.	DATE	DESCRIPTION
1	2024-01-15	ISSUED FOR PERMIT
2	2024-01-20	REVISIONS TO PERMIT
3	2024-01-25	REVISIONS TO PERMIT
4	2024-02-01	REVISIONS TO PERMIT
5	2024-02-05	REVISIONS TO PERMIT
6	2024-02-10	REVISIONS TO PERMIT
7	2024-02-15	REVISIONS TO PERMIT
8	2024-02-20	REVISIONS TO PERMIT
9	2024-02-25	REVISIONS TO PERMIT
10	2024-03-01	REVISIONS TO PERMIT

PROJECT: [REDACTED]
 CLIENT: [REDACTED]
 ARCHITECT: [REDACTED]
 DATE: [REDACTED]
 SCALE: [REDACTED]

MATERIALS KEY

100	CONCRETE
101	CONCRETE
102	CONCRETE
103	CONCRETE
104	CONCRETE
105	CONCRETE
106	CONCRETE
107	CONCRETE
108	CONCRETE
109	CONCRETE
110	CONCRETE
111	CONCRETE
112	CONCRETE
113	CONCRETE
114	CONCRETE
115	CONCRETE
116	CONCRETE
117	CONCRETE
118	CONCRETE
119	CONCRETE
120	CONCRETE
121	CONCRETE
122	CONCRETE
123	CONCRETE
124	CONCRETE
125	CONCRETE
126	CONCRETE
127	CONCRETE
128	CONCRETE
129	CONCRETE
130	CONCRETE
131	CONCRETE
132	CONCRETE
133	CONCRETE
134	CONCRETE
135	CONCRETE
136	CONCRETE
137	CONCRETE
138	CONCRETE
139	CONCRETE
140	CONCRETE
141	CONCRETE
142	CONCRETE
143	CONCRETE
144	CONCRETE
145	CONCRETE
146	CONCRETE
147	CONCRETE
148	CONCRETE
149	CONCRETE
150	CONCRETE
151	CONCRETE
152	CONCRETE
153	CONCRETE
154	CONCRETE
155	CONCRETE
156	CONCRETE
157	CONCRETE
158	CONCRETE
159	CONCRETE
160	CONCRETE
161	CONCRETE
162	CONCRETE
163	CONCRETE
164	CONCRETE
165	CONCRETE
166	CONCRETE
167	CONCRETE
168	CONCRETE
169	CONCRETE
170	CONCRETE
171	CONCRETE
172	CONCRETE
173	CONCRETE
174	CONCRETE
175	CONCRETE
176	CONCRETE
177	CONCRETE
178	CONCRETE
179	CONCRETE
180	CONCRETE
181	CONCRETE
182	CONCRETE
183	CONCRETE
184	CONCRETE
185	CONCRETE
186	CONCRETE
187	CONCRETE
188	CONCRETE
189	CONCRETE
190	CONCRETE
191	CONCRETE
192	CONCRETE
193	CONCRETE
194	CONCRETE
195	CONCRETE
196	CONCRETE
197	CONCRETE
198	CONCRETE
199	CONCRETE
200	CONCRETE
201	CONCRETE
202	CONCRETE
203	CONCRETE
204	CONCRETE
205	CONCRETE
206	CONCRETE
207	CONCRETE
208	CONCRETE
209	CONCRETE
210	CONCRETE
211	CONCRETE
212	CONCRETE
213	CONCRETE
214	CONCRETE
215	CONCRETE
216	CONCRETE
217	CONCRETE
218	CONCRETE
219	CONCRETE
220	CONCRETE
221	CONCRETE
222	CONCRETE
223	CONCRETE
224	CONCRETE
225	CONCRETE
226	CONCRETE
227	CONCRETE
228	CONCRETE
229	CONCRETE
230	CONCRETE
231	CONCRETE
232	CONCRETE
233	CONCRETE
234	CONCRETE
235	CONCRETE
236	CONCRETE
237	CONCRETE
238	CONCRETE
239	CONCRETE
240	CONCRETE
241	CONCRETE
242	CONCRETE
243	CONCRETE
244	CONCRETE
245	CONCRETE
246	CONCRETE
247	CONCRETE
248	CONCRETE
249	CONCRETE
250	CONCRETE
251	CONCRETE
252	CONCRETE
253	CONCRETE
254	CONCRETE
255	CONCRETE
256	CONCRETE
257	CONCRETE
258	CONCRETE
259	CONCRETE
260	CONCRETE
261	CONCRETE
262	CONCRETE
263	CONCRETE
264	CONCRETE
265	CONCRETE
266	CONCRETE
267	CONCRETE
268	CONCRETE
269	CONCRETE
270	CONCRETE
271	CONCRETE
272	CONCRETE
273	CONCRETE
274	CONCRETE
275	CONCRETE
276	CONCRETE
277	CONCRETE
278	CONCRETE
279	CONCRETE
280	CONCRETE
281	CONCRETE
282	CONCRETE
283	CONCRETE
284	CONCRETE
285	CONCRETE
286	CONCRETE
287	CONCRETE
288	CONCRETE
289	CONCRETE
290	CONCRETE
291	CONCRETE
292	CONCRETE
293	CONCRETE
294	CONCRETE
295	CONCRETE
296	CONCRETE
297	CONCRETE
298	CONCRETE
299	CONCRETE
300	CONCRETE

GENERAL NOTES

MISC

1. ALL WORK TO BE IN ACCORDANCE WITH THE NATIONAL BUILDING REGULATIONS 2011 AND THE NATIONAL ELECTRICAL REGULATIONS 2017.

2. ALL WORK TO BE IN ACCORDANCE WITH THE NATIONAL PLUMBING REGULATIONS 2011 AND THE NATIONAL GAS REGULATIONS 2011.

3. ALL WORK TO BE IN ACCORDANCE WITH THE NATIONAL MECHANICAL REGULATIONS 2011 AND THE NATIONAL HEATING REGULATIONS 2011.

4. ALL WORK TO BE IN ACCORDANCE WITH THE NATIONAL FIRE REGULATIONS 2011 AND THE NATIONAL SAFETY REGULATIONS 2011.

5. ALL WORK TO BE IN ACCORDANCE WITH THE NATIONAL ENVIRONMENTAL REGULATIONS 2011 AND THE NATIONAL SUSTAINABILITY REGULATIONS 2011.

6. ALL WORK TO BE IN ACCORDANCE WITH THE NATIONAL ACCESSIBILITY REGULATIONS 2011 AND THE NATIONAL DISABILITY REGULATIONS 2011.

7. ALL WORK TO BE IN ACCORDANCE WITH THE NATIONAL HEALTH REGULATIONS 2011 AND THE NATIONAL WELLNESS REGULATIONS 2011.

8. ALL WORK TO BE IN ACCORDANCE WITH THE NATIONAL EDUCATIONAL REGULATIONS 2011 AND THE NATIONAL RESEARCH REGULATIONS 2011.

9. ALL WORK TO BE IN ACCORDANCE WITH THE NATIONAL CULTURAL REGULATIONS 2011 AND THE NATIONAL HERITAGE REGULATIONS 2011.

10. ALL WORK TO BE IN ACCORDANCE WITH THE NATIONAL ARTS REGULATIONS 2011 AND THE NATIONAL SPORTS REGULATIONS 2011.

11. ALL WORK TO BE IN ACCORDANCE WITH THE NATIONAL MEDIA REGULATIONS 2011 AND THE NATIONAL COMMUNICATIONS REGULATIONS 2011.

12. ALL WORK TO BE IN ACCORDANCE WITH THE NATIONAL TECHNOLOGY REGULATIONS 2011 AND THE NATIONAL INNOVATION REGULATIONS 2011.

13. ALL WORK TO BE IN ACCORDANCE WITH THE NATIONAL SCIENCE REGULATIONS 2011 AND THE NATIONAL RESEARCH REGULATIONS 2011.

14. ALL WORK TO BE IN ACCORDANCE WITH THE NATIONAL HEALTH REGULATIONS 2011 AND THE NATIONAL WELLNESS REGULATIONS 2011.

15. ALL WORK TO BE IN ACCORDANCE WITH THE NATIONAL EDUCATIONAL REGULATIONS 2011 AND THE NATIONAL RESEARCH REGULATIONS 2011.

16. ALL WORK TO BE IN ACCORDANCE WITH THE NATIONAL CULTURAL REGULATIONS 2011 AND THE NATIONAL HERITAGE REGULATIONS 2011.

17. ALL WORK TO BE IN ACCORDANCE WITH THE NATIONAL ARTS REGULATIONS 2011 AND THE NATIONAL SPORTS REGULATIONS 2011.

18. ALL WORK TO BE IN ACCORDANCE WITH THE NATIONAL MEDIA REGULATIONS 2011 AND THE NATIONAL COMMUNICATIONS REGULATIONS 2011.

19. ALL WORK TO BE IN ACCORDANCE WITH THE NATIONAL TECHNOLOGY REGULATIONS 2011 AND THE NATIONAL INNOVATION REGULATIONS 2011.

20. ALL WORK TO BE IN ACCORDANCE WITH THE NATIONAL SCIENCE REGULATIONS 2011 AND THE NATIONAL RESEARCH REGULATIONS 2011.

REVISIONS

NO.	DATE	BY	REVISION
1	10/03/2018	ADL	ISSUE FOR PERMIT
2	15/03/2018	ADL	ISSUE FOR PERMIT
3	20/03/2018	ADL	ISSUE FOR PERMIT
4	25/03/2018	ADL	ISSUE FOR PERMIT
5	30/03/2018	ADL	ISSUE FOR PERMIT

