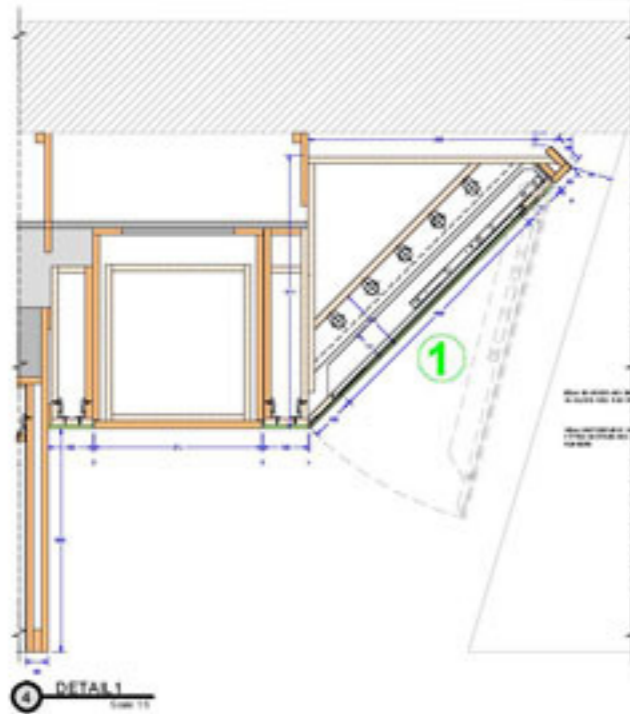


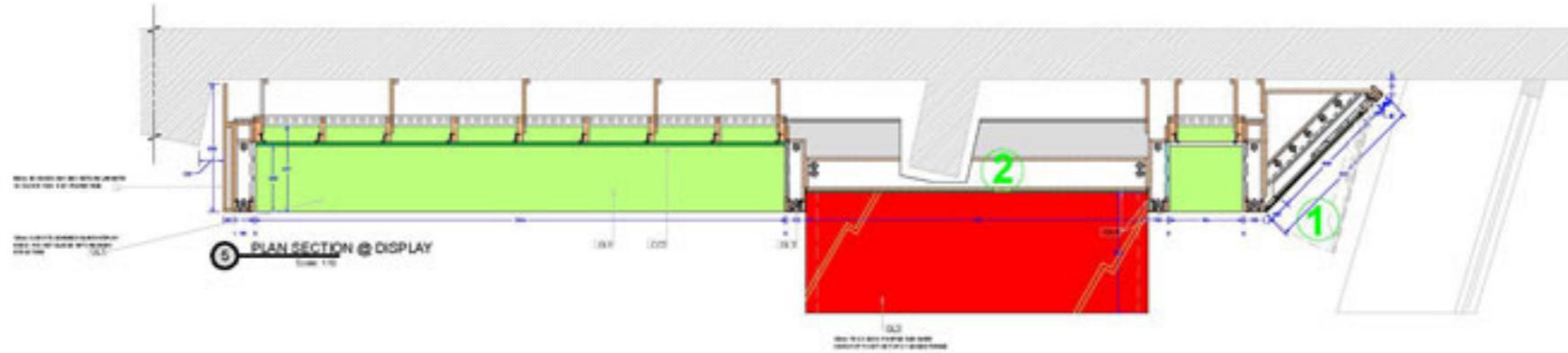
2 ELEVATION A
Scale 1:5



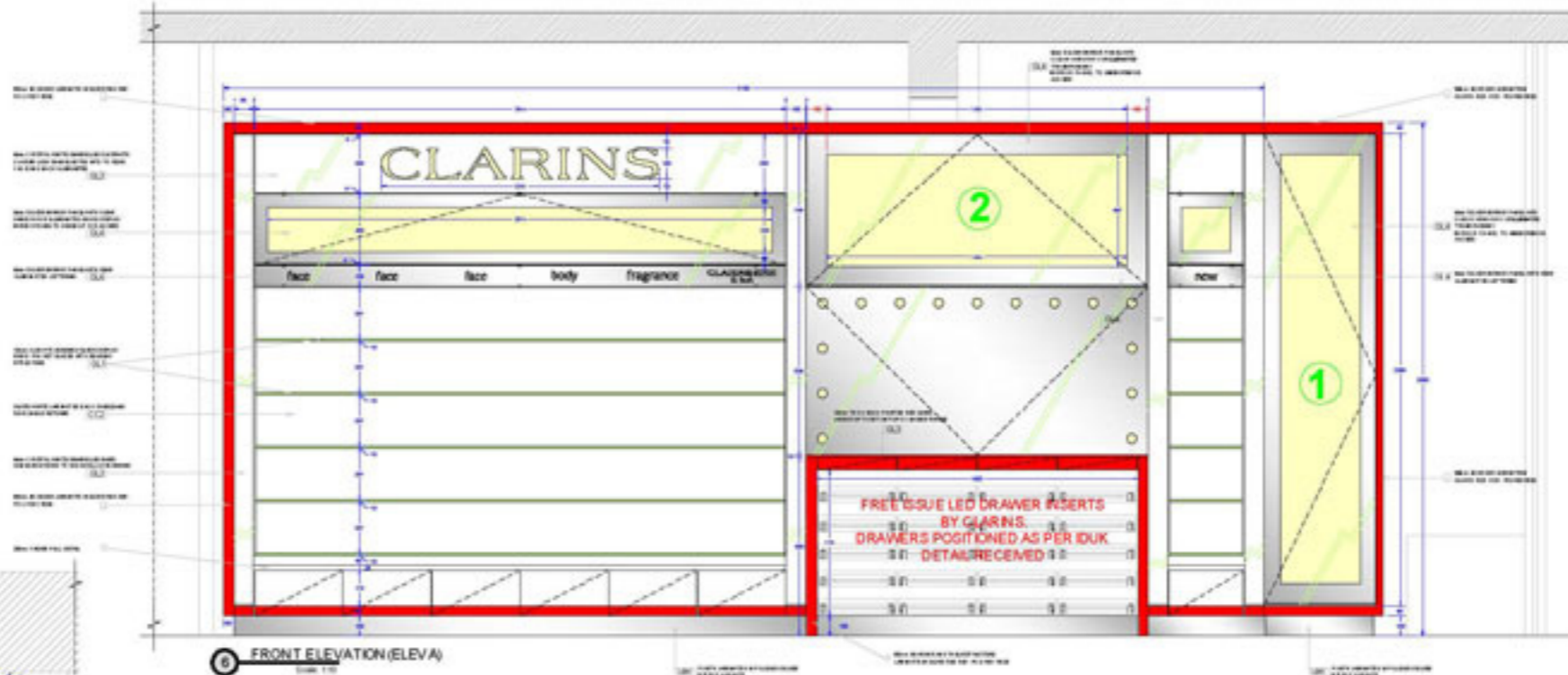
3 FIXTURE PLAN
Scale 1:5



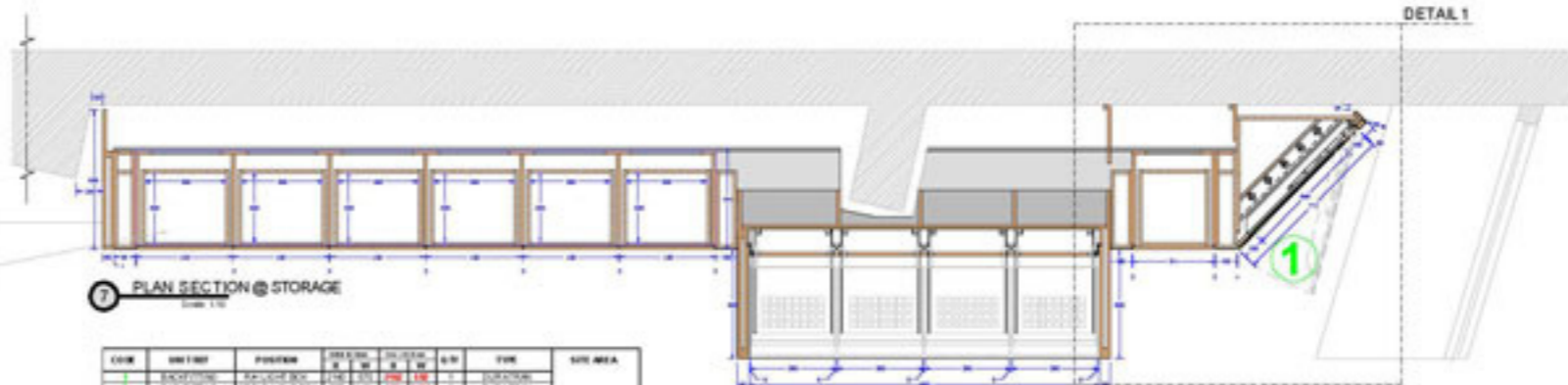
4 DETAIL 1
Scale 1:5



5 PLAN SECTION @ DISPLAY
Scale 1:5



6 FRONT ELEVATION (ELEV A)
Scale 1:5



7 PLAN SECTION @ STORAGE
Scale 1:5

CODE	ITEM	POSITION	QUANTITY	UNIT PRICE	TOTAL PRICE	AMOUNT	DATE	SQ. AREA
	ENCLOSURE		1					
	SHELVING		1					
	FRONT GLASS		1					
	FRONT PANEL		1					
	FRONT PANEL		1					
	FRONT PANEL		1					
	FRONT PANEL		1					
	FRONT PANEL		1					
	FRONT PANEL		1					
	FRONT PANEL		1					
	FRONT PANEL		1					
	FRONT PANEL		1					
	FRONT PANEL		1					
	FRONT PANEL		1					
	FRONT PANEL		1					
	FRONT PANEL		1					
	FRONT PANEL		1					
	FRONT PANEL		1					
	FRONT PANEL		1					
	FRONT PANEL		1					
	FRONT PANEL		1					
	FRONT PANEL		1					
	FRONT PANEL		1					
	FRONT PANEL		1					
	FRONT PANEL		1					

36
Sq/M

FREE ISSUE LED DRAWER INSERTS
BY CLARINS.
DRAWERS POSITIONED AS PER IOK
DETAIL RECEIVED



MATERIALS KEY

1	FRONT PANEL (CLARINS LOGO)
2	FRONT PANEL (GLASS)
3	FRONT PANEL (FRAME)
4	FRONT PANEL (SHELVING)
5	FRONT PANEL (FRAME)
6	FRONT PANEL (SHELVING)
7	FRONT PANEL (FRAME)
8	FRONT PANEL (SHELVING)
9	FRONT PANEL (FRAME)
10	FRONT PANEL (SHELVING)
11	FRONT PANEL (FRAME)
12	FRONT PANEL (SHELVING)
13	FRONT PANEL (FRAME)
14	FRONT PANEL (SHELVING)
15	FRONT PANEL (FRAME)
16	FRONT PANEL (SHELVING)
17	FRONT PANEL (FRAME)
18	FRONT PANEL (SHELVING)
19	FRONT PANEL (FRAME)
20	FRONT PANEL (SHELVING)
21	FRONT PANEL (FRAME)
22	FRONT PANEL (SHELVING)
23	FRONT PANEL (FRAME)
24	FRONT PANEL (SHELVING)
25	FRONT PANEL (FRAME)
26	FRONT PANEL (SHELVING)
27	FRONT PANEL (FRAME)
28	FRONT PANEL (SHELVING)
29	FRONT PANEL (FRAME)
30	FRONT PANEL (SHELVING)
31	FRONT PANEL (FRAME)
32	FRONT PANEL (SHELVING)
33	FRONT PANEL (FRAME)
34	FRONT PANEL (SHELVING)
35	FRONT PANEL (FRAME)
36	FRONT PANEL (SHELVING)
37	FRONT PANEL (FRAME)
38	FRONT PANEL (SHELVING)
39	FRONT PANEL (FRAME)
40	FRONT PANEL (SHELVING)
41	FRONT PANEL (FRAME)
42	FRONT PANEL (SHELVING)
43	FRONT PANEL (FRAME)
44	FRONT PANEL (SHELVING)
45	FRONT PANEL (FRAME)
46	FRONT PANEL (SHELVING)
47	FRONT PANEL (FRAME)
48	FRONT PANEL (SHELVING)
49	FRONT PANEL (FRAME)
50	FRONT PANEL (SHELVING)
51	FRONT PANEL (FRAME)
52	FRONT PANEL (SHELVING)
53	FRONT PANEL (FRAME)
54	FRONT PANEL (SHELVING)
55	FRONT PANEL (FRAME)
56	FRONT PANEL (SHELVING)
57	FRONT PANEL (FRAME)
58	FRONT PANEL (SHELVING)
59	FRONT PANEL (FRAME)
60	FRONT PANEL (SHELVING)
61	FRONT PANEL (FRAME)
62	FRONT PANEL (SHELVING)
63	FRONT PANEL (FRAME)
64	FRONT PANEL (SHELVING)
65	FRONT PANEL (FRAME)
66	FRONT PANEL (SHELVING)
67	FRONT PANEL (FRAME)
68	FRONT PANEL (SHELVING)
69	FRONT PANEL (FRAME)
70	FRONT PANEL (SHELVING)
71	FRONT PANEL (FRAME)
72	FRONT PANEL (SHELVING)
73	FRONT PANEL (FRAME)
74	FRONT PANEL (SHELVING)
75	FRONT PANEL (FRAME)
76	FRONT PANEL (SHELVING)
77	FRONT PANEL (FRAME)
78	FRONT PANEL (SHELVING)
79	FRONT PANEL (FRAME)
80	FRONT PANEL (SHELVING)
81	FRONT PANEL (FRAME)
82	FRONT PANEL (SHELVING)
83	FRONT PANEL (FRAME)
84	FRONT PANEL (SHELVING)
85	FRONT PANEL (FRAME)
86	FRONT PANEL (SHELVING)
87	FRONT PANEL (FRAME)
88	FRONT PANEL (SHELVING)
89	FRONT PANEL (FRAME)
90	FRONT PANEL (SHELVING)
91	FRONT PANEL (FRAME)
92	FRONT PANEL (SHELVING)
93	FRONT PANEL (FRAME)
94	FRONT PANEL (SHELVING)
95	FRONT PANEL (FRAME)
96	FRONT PANEL (SHELVING)
97	FRONT PANEL (FRAME)
98	FRONT PANEL (SHELVING)
99	FRONT PANEL (FRAME)
100	FRONT PANEL (SHELVING)

GENERAL NOTES

1. ALL DIMENSIONS ARE IN MILLIMETERS UNLESS OTHERWISE SPECIFIED.

2. ALL SURFACES ARE TO BE FINISHED TO A HIGH STANDARD.

3. ALL MATERIALS TO BE SUPPLIED AND INSTALLED BY THE CONTRACTOR.

4. ALL MATERIALS TO BE OF THE HIGHEST QUALITY AVAILABLE.

5. ALL MATERIALS TO BE COMPLETED BY THE CONTRACTOR.

6. ALL MATERIALS TO BE COMPLETED BY THE CONTRACTOR.

7. ALL MATERIALS TO BE COMPLETED BY THE CONTRACTOR.

8. ALL MATERIALS TO BE COMPLETED BY THE CONTRACTOR.

9. ALL MATERIALS TO BE COMPLETED BY THE CONTRACTOR.

10. ALL MATERIALS TO BE COMPLETED BY THE CONTRACTOR.

11. ALL MATERIALS TO BE COMPLETED BY THE CONTRACTOR.

12. ALL MATERIALS TO BE COMPLETED BY THE CONTRACTOR.

13. ALL MATERIALS TO BE COMPLETED BY THE CONTRACTOR.

14. ALL MATERIALS TO BE COMPLETED BY THE CONTRACTOR.

15. ALL MATERIALS TO BE COMPLETED BY THE CONTRACTOR.

16. ALL MATERIALS TO BE COMPLETED BY THE CONTRACTOR.

17. ALL MATERIALS TO BE COMPLETED BY THE CONTRACTOR.

18. ALL MATERIALS TO BE COMPLETED BY THE CONTRACTOR.

19. ALL MATERIALS TO BE COMPLETED BY THE CONTRACTOR.

20. ALL MATERIALS TO BE COMPLETED BY THE CONTRACTOR.

CLARINS

THE CUTTING COMP
WEISSAUSTRALIA

NO.	DATE
01	25 OCT 2014
02	15 OCT 2015

REVISIONS

NO.	DATE	REVISION
01	25 OCT 2014	ISSUE FOR TENDER
02	15 OCT 2015	ISSUE FOR TENDER

